

MS1-S 系列 弹簧类普通小微动



产品特性

- ◎ 可靠的换档设计
- ◎ 长寿命的机械及电气
- ◎ 紧凑式的外形尺寸
- ◎ 电气寿命10万次

典型应用

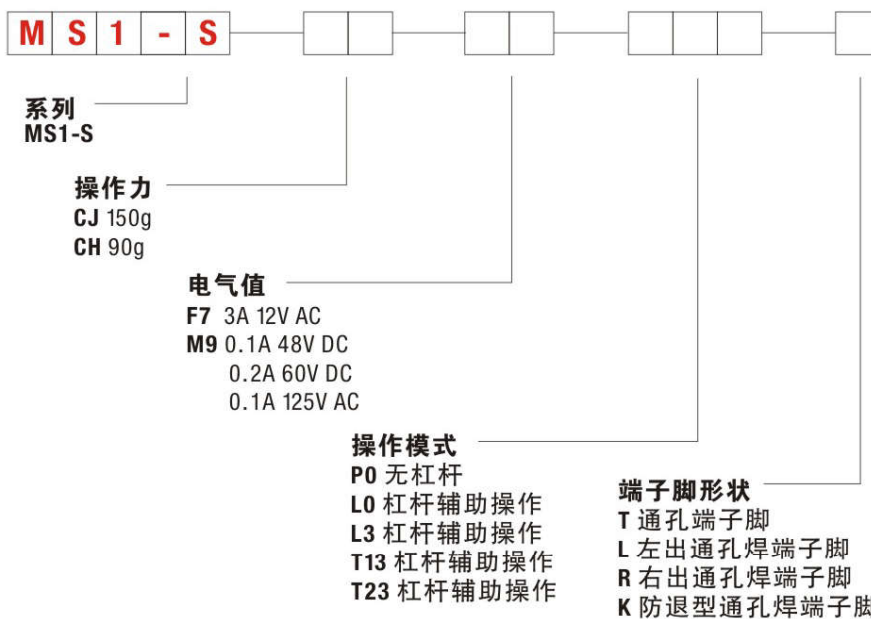
- ◎ 检测功能
- ◎ 手持电话
- ◎ 测试设备
- ◎ 安全报警设备
- ◎ 消费电子

产品规格

- ◎ 标称值：F7 3A @ 125 VAC
M9 0.2A @ 60 VDC.
- ◎ 绝缘电阻：100M Ω min.
- ◎ 抗电强度：1000 Vrms.
- ◎ 工作温度范围：-30°~85°
- ◎ 操作力：CJ:150g max
CH:90 g max

材质

- ◎ 上盖：PBT
- ◎ 按钮：PBT
- ◎ 本体：PBT
- ◎ 弹簧：不锈钢
- ◎ 动片：磷铜
- ◎ 触点：银或银镀金

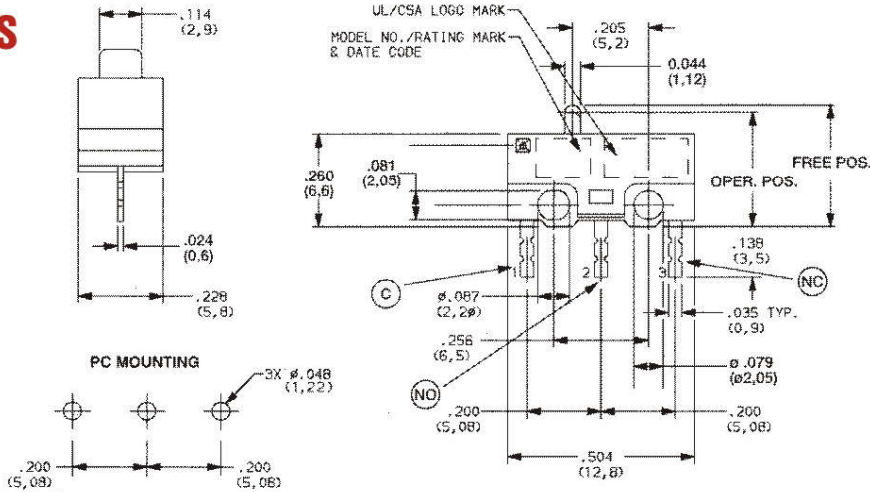


| Option Code | UL cULus 61058-1 | |
|-------------|--|--|
| F7 | 3 A 125 V AC 3 A 30 V DC | 3 A 125 V AC |
| M9 | 0.1 A 48 V DC 0.2 A 60 V DC 0.1 A 125 V AC | 0.1 A 48 V DC 0.2 A 60 V DC 0.1 A 125 V AC |

Dimensions are shown: inches(mm)
 Specifications and dimensions subject to change

系列

MS1-S



MS系列微动开关

操作力

| OPTION CODE | BASIC SWITCH OPERATING FORCE (OZ./GRAMS) |
|-------------|--|
| CJ | 5.29 150 |
| CH | 3.15 90 |

电气值

| OPTION CODE | RoHS COMPLIANT* | RoHS COMPATIBLE* | CONTACT MATERIAL | | ELECTRICAL RATING |
|-------------|-----------------|------------------|------------------------------|--------------------|-------------------|
| | | | MOVABLE CONTACT | STATIONARY CONTACT | |
| F7 | Yes | Yes | Silver alloy | | see chart |
| M9 | Yes | Yes | Gold plating or silver alloy | | see chart |

*注意：此产品符合RoHS
所有型号均有UL认证。
请联系销售人员确认产品型号及电流值。

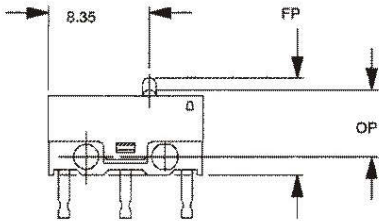
| Option Code | UL 61058-1 | UL |
|-------------|--------------------------------|--------------------------------|
| F7 | 3 A 125 V AC 3 A 30 V DC | 3 A 125 V AC |
| M9 | 0.1 A 48 V DC 0.2 A 60 V DC | 0.1 A 48 V DC 0.2 A 60 V DC |
| | 0.1 A 125 V AC | 0.1 A 125 V AC |



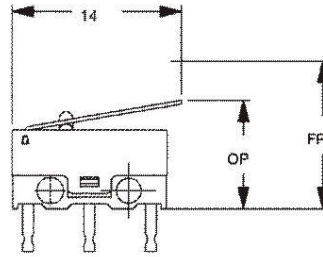
Dimensions are shown: inches(mm)
Specifications and dimensions subject to change

操作模式

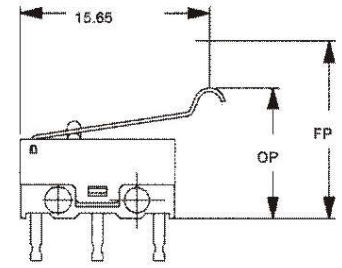
P0 PIN PLUNGER



L0 LEAF, 50 GRAMS (CJ ONLY)
L3 LEAF, 30 GRAMS (CH ONLY)



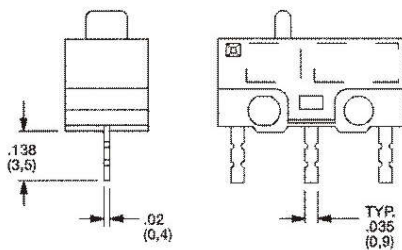
T13 SIMULATED ROLLER, 40 GRAMS (CJ ONLY)
T23 SIMULATED ROLLER, 25 GRAMS (CH ONLY)



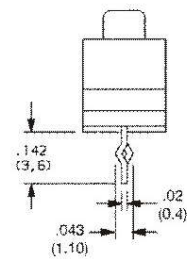
| ACTUATOR OPTION CODE | A (mm) | B Ref (mm) | C (mm) | D (mm) | E (mm) | DIFF. MOTION mm MAX | OPER. FORCE grams MAX | | RELEASED FORCE Grams MAX | OVER TRAVEL MIN |
|----------------------|-----------------|------------------------------|----------------|--------------------|-------------------|---------------------|-----------------------|----|--------------------------|-----------------|
| | LENGTH OF LEVER | LEVER LENGTH MTG. HOLE TO OP | PRE-TRAVEL MAX | OPERATING POSITION | FREE POSITION MAX | | CJ | CH | | |
| P0 PIN PLUNGER | NA | NA | 1.3 | 7.0 ±0.3 | 8.0 | 0.3 | 150 | 90 | 15-20 | 0.2 |
| L0 LEAF | 13.0 | 4.03 | 3.4 | 8.4 ±0.8 | 11.0 | 1.3 | 50 | - | 8 | 0.6 |
| L3 LEAF | 13.0 | 4.03 | 3.4 | 8.4 ±0.8 | 11.0 | 1.3 | - | 30 | 5 | 0.6 |
| T13 SIMULATED ROLLER | 15.0 | 5.36 | 3.8 | 10.5 ±0.8 | 13.0 | 1.5 | 40 | - | 7 | 0.6 |
| T23 SIMULATED ROLLER | 15.0 | 5.36 | 3.8 | 10.5 ±0.8 | 13.0 | 1.5 | - | 25 | 4 | 0.6 |

端子脚形状

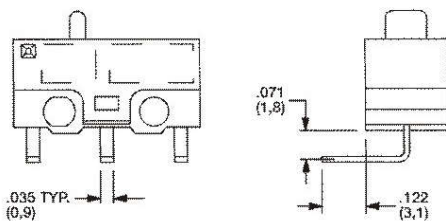
T (STD.) PC THRU-HOLE



K PC THRU-HOLE WITH RETENTION FEATURE



L LEFT FOOTED, PC THRU-HOLE



R RIGHT FOOTED, PC THRU-HOLE

